

inj. 1ul abdominal cuticle extract of 5 lab-reared male  
s 20-29-days-old without access to plants; fed pea aphid,  
Sitotroga eggs & honey water, & dissected 8/13 (5 males /40ul CH2Cl2 conc. to ca. 5ul), HP-5.

=====  
Injection Date : 8/13/2008 12:16:15 PM

Sample Name : lab 5M C.ocu abd

Location : -

Acq. Operator : Aldrich

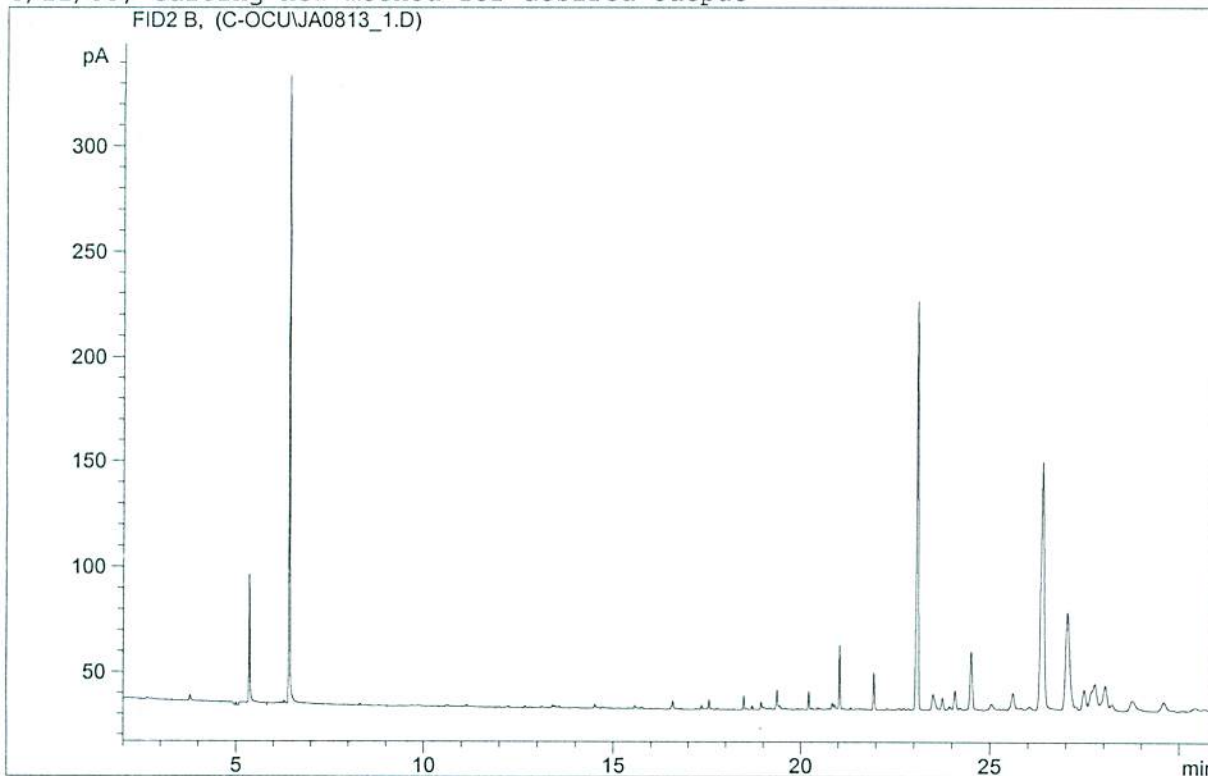
Inj : 1

Inj Volume : Manually

Method : C:\HPCHEM\1\METHODS\DBLESS08.M

Last changed : 8/12/2008 11:55:44 AM by Aldrich

6/11/08; editing new method for desired output



=====  
Area Percent Report  
=====

Sorted By : Signal  
Multiplier : 1.0000  
Dilution : 1.0000

Signal 1: FID2 B,

Peak #	RetTime [min]	Type	Width [min]	Area [pA*s]	Height [pA]	Area %
1	0.467	PP	0.0146	11.00343	11.05655	0.00042
2	0.533	VV S	0.0158	1.49228e5	1.78474e5	5.64316
3	0.580	VV S	0.1004	2.49193e6	4.13768e5	94.23391
4	1.460	VB S	0.0150	94.79893	105.41685	0.00358
5	1.607	BV	0.0346	3.69842	1.82972	0.00014
6	1.705	VV	0.0500	13.28734	3.69150	0.00050
7	1.808	VB	0.0391	8.82340	3.31357	0.00033
8	3.779	BB	0.0424	7.50409	2.69936	0.00028
9	5.000	PP	0.0199	1.56996	1.31328	5.937e-5
10	5.350	PB	0.0319	124.22678	60.51726	0.00470
11	6.423	PB	0.0291	560.39868	295.85358	0.02119
12	14.517	PP	0.0367	3.98305	1.67948	0.00015

5 lab 5M C.ocu abd - w/o

Peak #	RetTime [min]	Type	Width [min]	Area [pA*s]	Height [pA]	Area %
13	15.573	PB	0.0323	2.98141	1.43181	0.00011
14	16.582	BB	0.0399	9.70355	3.54346	0.00037
15	17.346	PB	0.0380	4.34248	1.80657	0.00016
16	17.548	BB	0.0316	8.73558	4.31165	0.00033
17	18.474	PB	0.0305	12.21688	6.34637	0.00046
18	18.698	PP	0.0316	3.95342	1.95121	0.00015
19	18.937	PB	0.0366	8.24157	3.24932	0.00031
20	19.363	PB	0.0374	21.85039	8.65924	0.00083
21	20.219	PP	0.0305	16.78219	8.69974	0.00063
22	20.841	PV	0.0381	7.63631	3.05681	0.00029
23	20.905	VB	0.0408	6.59770	2.34588	0.00025
24	21.042	BB	0.0321	61.60423	29.81875	0.00233
25	21.952	BB	0.0384	42.66174	17.52662	0.00161
26	23.097	BB	0.0503	635.12579	193.42932	0.02402
27	23.514	PB	0.0719	40.07027	7.20589	0.00152
28	23.759	BP	0.0534	18.85434	5.44812	0.00071
29	24.090	PP	0.0583	31.83170	8.57640	0.00120
30	24.514	BP	0.0645	111.57770	27.38947	0.00422
31	25.609	BB	0.0803	39.63595	7.41917	0.00150
32	26.385	BB	0.0864	692.35138	116.42314	0.02618
33	27.046	BB	0.1021	337.83240	45.27579	0.01278
34	27.486	PV	0.0771	59.37449	9.47800	0.00225
35	27.771	VV	0.1364	135.91484	12.25323	0.00514
36	28.044	VB	0.1226	111.49355	11.55581	0.00422

Totals : 2.64441e6 5.93267e5

Results obtained with enhanced integrator!

\*\*\* End of Report \*\*\*